



**Higham Primary School**  
Grow, Learn, Believe, Achieve



# Welcome to Owls class

Our teacher is Mrs Driscoll.

Mrs Turner is our class TA.



# Higham Primary School

Grow, Learn, Believe, Achieve

	8.40 – 8.50	8.50 – 9.00	9.00 – 10.00	10.00 – 10.30	10.30 – 10.45	10.45 – 12.00	12.00-1.00	1.00 – 3.30			
Mon	Register	TT App/Paper	MATHS (60)	WCR (30)		Spelling Test	ENGLISH (60)	AR (20)	PSHE (50)	COMPUTING 2.15 – 3.15 (60)	Class Story
Tue	Register	TT App/Paper	MATHS (60)	Whole School Assembly 10.00 – 10.30		Spelling – intro to new words (30)	English (45)	AR (20)	HUMANITIES / SCIENCE (50)	PE (60)	Class Story
Wed	Register	Spelling App/Paper	SPAG (55)	ARITHMETIC (35)		MATHS (Topic) (75)		AR (20)	MUSIC / FRENCH (50)	RE (60)	Word Games
Thurs	Register	Spelling App/Paper	MATHS (60)	WCR (30)		Spelling	ENGLISH (60)	AR (20)	HUMANITIES / SCIENCE / ART / DT (110)		Class Story
Fri	Register	Finishing Off Handwriting/Spelling	MATHS (60)	WCR (30)		Spelling	ENGLISH (60)	AR (20)	HUMANITIES / SCIENCE / ART/DT (85)		Celebration Assembly 2.45 to 3.10

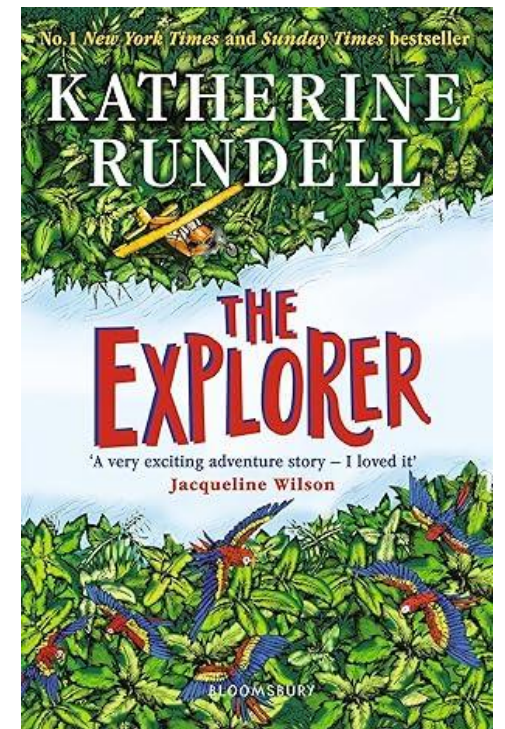
# Timetable of the Day



**Higham Primary School**  
Grow, Learn, Believe, Achieve

# English

- In English, we will use a wide range of high-quality texts to engage pupils and develop their reading and writing skills across the course of the year. Some of these texts may also link to our topic work, for example the book that we have just begun this week is 'The Explorer' by Katherine Rundell, which links well with our Humanities work on explorers and the rainforest.





**Higham Primary School**  
Grow, Learn, Believe, Achieve

# English - Spellings

- We will be using Spelling Shed our spelling programme. They will have a 30 minute lesson every Tuesday which will focus on a spelling rule or pattern, followed by daily spelling activities linked to the spelling rule or pattern being studied.
- There will be a weekly spelling test every Monday. A list of the spelling rules/patterns which we will study during the term is available on the class page of the school website for your information as I am aware that sheets can sometimes not make it home!
- Pupils all have a Spelling Shed account and will have access to the online games which will support them in strengthening their recall. The log in for this can be found in the front of their yellow reading record.
- A Parent Guide is available here: <https://play.edshed.com/en-gb/login>





**Higham Primary School**  
Grow, Learn, Believe, Achieve

# Accelerated Reader

- Please sign up to HOME CONNECT using the link provided on the letter which was sent home in week one. If you need another copy, let us know.
- Please enable “Email Notifications” so you can see how your child scores on their quizzes.
- All pupils need to bring in their AR book and reading record every day. We have time dedicated to reading every day.



# Why Reading is Important

- **Builds focus and attention** – improves concentration and ability to stay engaged for longer.
- **Boosts knowledge and confidence** – the more children read, the more they know, and this builds self-esteem.
- **Expands vocabulary and communication** – avid readers learn new words in context, making it easier to express themselves.
- **Raises achievement** – strong reading habits support success across all areas of the curriculum.
- **Stimulates creativity and thinking** – reading challenges the brain, sparks imagination, and develops new ways of thinking.
- **Improves spelling naturally** – seeing words repeatedly reinforces correct spelling.
- **Encourages empathy and cultural awareness** – books open up new worlds, ideas, and perspectives on people, places, and beliefs.





The survey of 71,400 children and young people by the National Literacy Trust early in 2023 has revealed that **fewer than one in three children (28%) aged eight to 18 read daily for enjoyment.** While this remains the same as for 2022, the figure stood at 38% when the survey began in 2005, marking a 26% fall in those who read daily.

# Impact of reading

Amount of reading	20 mins	5 mins	1 min
Number of minutes per year	3600	900	180
Number of words per year	1.8 Million	282,000	8000
Hours read by the end of primary school	851	212	42
Performance on tests	90%	50%	10%



**Higham Primary School**  
Grow, Learn, Believe, Achieve

## Maths

- Maths homework is not formally set. However, all children are encouraged to practise their times tables recall using TT Rockstars.



## Optional SATs Homework



- From Spring term onwards, there will be optional weekly maths and English homework to help year six pupils prepare for their SATs test in May. The homework will include test-style questions and will enable them to revise their understanding of work covered in years three to five, as well as new knowledge gained during year six. More details will be given closer to the time.



# Higham Primary School

Grow, Learn, Believe, Achieve

## Topics

	Autumn		Spring		Summer
Humanities	Explorers – looking at North and South America with a focus on the Amazon rainforest and then the Mayan civilisation		Inventors and Industry – a local history study looking at the Victorian era, including the work of Charles Dickens		All Change – Finding out about Dawin’s voyage to the Galapagos Islands
Science	Light	Living things and their habitats	Electricity	Evolution and inheritance	Animals including humans
DT / Art	Working with colour Creative week activities		Printing Electrical Systems – steady hand game		Textiles Mechanical Systems
PE	Hockey Gymnastics		Handball Tag Rugby		Rounders Athletics



**Higham Primary School**  
Grow, Learn, Believe, Achieve

# PE

- Our PE day this year is **TUESDAY**. Should this need to be changed, you will be notified in advance.
- Please make sure your child is wearing the correct PE kit:
  - T-shirt in house colour (Twist, Copperfield, Peggotty or Pip)
  - Fleece in house colour or black hoodie
  - PE shorts in green/black
  - Jog bottoms or legging in black only
  - No logos on any items of clothing- please wear plain black only
  - Earrings and watches to be removed and hair tied back.

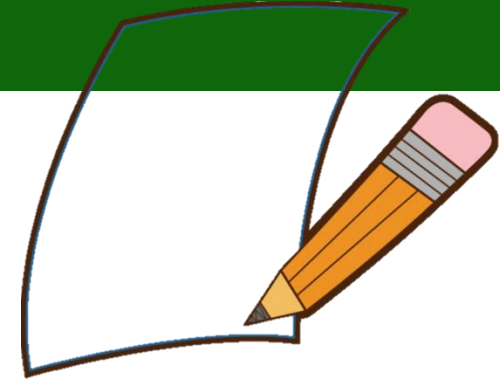




**Higham Primary School**  
Grow, Learn, Believe, Achieve

# External tests

- Children in year six will sit the Key Stage 2 statutory tests (often called SATs). The dates of these are set by the government.
- The statutory key stage 2 tests are timetabled from **Monday 11th May to Thursday 14th May 2026**.
- During SATs week, we offer a breakfast club which we encourage all year six children to come along to. This will be free of charge and will give the children the opportunity to support each other in the run up to the test, help alleviate anxiety and enable children to be in school and ready for the tests each day. More details will be sent out closer to the time.





**Higham Primary School**  
Grow, Learn, Believe, Achieve

# What they need to bring each day

- Reading book and Reading Record Book (yellow A5 book)
- Named water bottle
- All clothing named clearly – bags not too big (need to fit in lockers!)
- Snack in a named pot
  - Fresh fruit – prepared and ready to eat
  - Fresh vegetables – prepared and ready to eat
  - Plain breadsticks (nut / sesame seed free) – out of their wrapper and in a named snack pot.
  - Pitta bread or other bread – out of their wrapper and in a named snack pot.





**Higham Primary School**  
Grow, Learn, Believe, Achieve

# How to support your child at home

- Helping with homework – learning spellings (issued every Tuesday) and times tables
- Hearing them read regularly and asking them questions about what they have read
- Talk to them about school – What new facts did they learn today? What did they find tricky?
- Help them find other information / go on visits linked to the topics being studied.
- Keep an eye on the school website and Facebook pages for information about the different events in school and for other useful information

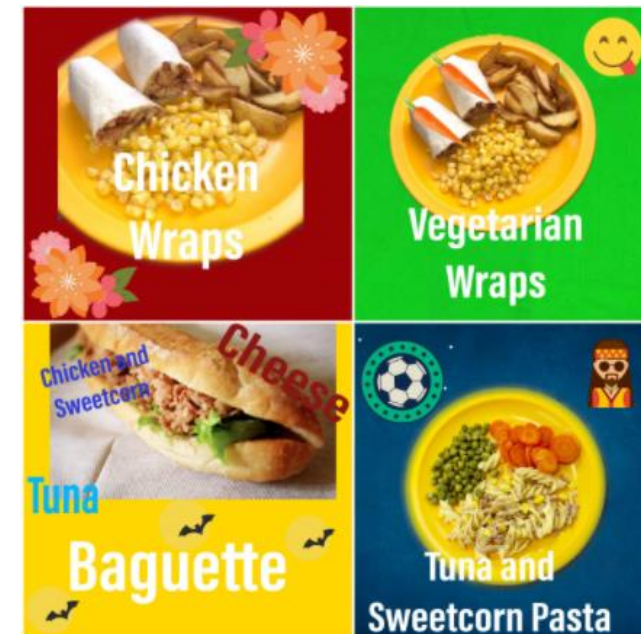


# Higham Primary School

Grow, Learn, Believe, Achieve

## Lunch

- Don't forget to try our tasty school dinners
- Menus are available on the school website
- Please wherever possible, order you child's meal in advance on Bromcom as this makes morning registration much quicker





**Higham Primary School**  
Grow, Learn, Believe, Achieve

# School Trips and Events

- School trips and workshops have not been finalised for this year yet, however I will try to give you as much notice as possible.
- Enterprise week will take place at the end of term 5 – the money raised from this is used to fund the post-SATS activities and Leavers BBQ





**Higham Primary School**  
Grow, Learn, Believe, Achieve

**Thank you for coming.**

**Do feel free to ask questions.**

**Alternatively, an email can be sent to the school office who will pass on any queries.**

**This presentation will be available on the**

**Owls class page of the school website.**