

# Owls Newsletter



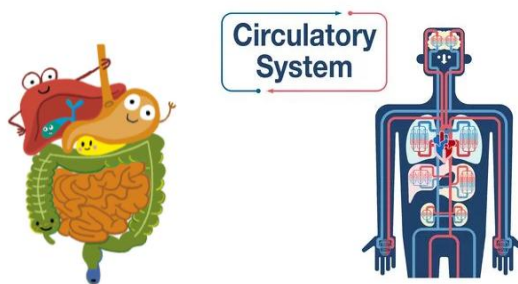
Dear Parents,

I hope that you had a relaxing break and an enjoyable Easter. Term five takes us into the summer term which is always a busy time for year six. We have lots happening this term, including Key Stage Two SATs tests and Enterprise Project. We will also begin to look ahead to transition to secondary school. Some information, such as Enterprise Project arrangements, will follow separately once details have been finalised.

## Our Topics

In term five, we will spend some time concluding our 'All Change' topic, finding out all about Charles Darwin and his work on evolution and inheritance, including Darwin's travels to the Galapagos Islands, which were a key factor in developing his theory. We will also continue to learn about evolution and inheritance. In this unit of work, children will find out more about how living things on earth have changed over time. They will be introduced to the idea that characteristics are passed from parents to their offspring and that variation in offspring over time can make animals more or less able to survive in particular environments.

Our science work this term will then look at 'Animals, including Humans'. In this unit of work, the class will learn about the main body parts and internal organs (skeletal, muscular and digestive system) to explore and answer questions that help them to understand how the circulatory system enables the body to function. Pupils should learn how to keep their bodies healthy and how their bodies might be damaged – including how some drugs and other substances can be harmful to the human body.



## Atom Learning – Y6 Homework

This term we will continue to use Atom Learning to set online homework for year six pupils. The homework takes the form of revision tasks to build confidence as we work towards our statutory key stage two assessments (SATs) in May. The homework will be optional. However, in addition to helping prepare for the SATs tests, completing the homework regularly will also help to develop time-management and organisational skills which are essential for a successful transition to secondary school. Homework runs from Monday to Sunday. Homework is set in two parts (one set of maths questions and one set of English questions). No homework will be set during SATs week. It will resume the following week and will continue into term 6.



## Key Stage Two Tests – Monday 12<sup>th</sup> May – Thursday 15<sup>th</sup> May.

The week commencing 12th May is national SATs (Standard Assessment Tests) week for all pupils in Year 6. Please ensure that your child is in school and on time to take the tests. There are no opportunities to catch up on these tests and these results are shared with secondary schools. A timetable for the tests can be seen below. The End of Key Stage 2 tests draw from the curriculum taught during years three, four and five, as well as their learning in year six. The children have been working very hard in class to prepare for these tests and we are confident that they will all do their very best.

- **Monday 12th May 2025:** Spelling, punctuation, and grammar (Grammar/Punctuation Test) – 45 minutes
- **Monday 12th May 2025:** Spelling, punctuation, and grammar (Spelling Test) – 20 minutes
- **Tuesday 13th May 2025:** Reading Paper (English) – 60 minutes
- **Wednesday 14th May 2025:** Maths Paper 1 (Arithmetic) – 30 minutes
- **Wednesday 14th May 2025:** Maths Paper 2 (Reasoning) – 40 minutes
- **Thursday 15th May 2025:** Maths Paper 3 (Reasoning) – 40 minutes

As in previous years, we will be holding a special **SATs Breakfast Club** for year six pupils during this week. This will be free of charge and will give the children the opportunity to support each other in the run up to the test, help alleviate anxiety and enable children to be in school and ready for the tests each day. A range of breakfast cereals and pastries will be available. Pupils should arrive at the playground gates at 8am promptly for SATs Breakfast Club. If not attending SATs Breakfast Club, it is also important that pupils arrive to school on time between 8:40am and 8:50am, as the tests will begin at 9am promptly. A letter has been sent home via email and as a paper copy. Please contact the school office if you require another copy.

## P.E

Our PE day will continue to be Monday. **The exception to this will be when our usual PE day is a bank holidays. In these weeks, PE will move from Monday 21<sup>st</sup> April to Thursday 24<sup>th</sup> April and from Monday 5<sup>th</sup> May to Thursday 8<sup>th</sup> May.** Please ensure your child wears suitable P.E kit on this day. In line with the policy, small stud earrings may be worn in school but must be removed for PE lessons. Long hair should be tied back for PE lessons.

## Enterprise Days

On Tuesday 20<sup>th</sup> May and Thursday 22<sup>nd</sup> May, Year 6 will be holding an Enterprise event to help them raise money for their end of year leavers' celebrations. Please send your child in with small change in a wallet/envelope if they wish to purchase something from one of the stalls available (please be aware, there will not be change available for notes). More details about what stalls will be selling will be given out nearer the time.

Each class will be signing up for a time slot to visit the stalls on both Tuesday and Thursday. Year 6 will also have the opportunity to run their stalls after school on Tuesday 20<sup>th</sup> May from 3:30 to 3:50 (more details and a consent form will be sent separately to Y6 parents about this) so do please come along and support them. Owls class are very grateful for parents/children support with this event.

Many Thanks,

Miss Davey