



**A Unique Delivery**



**Camping**



**Immersion**

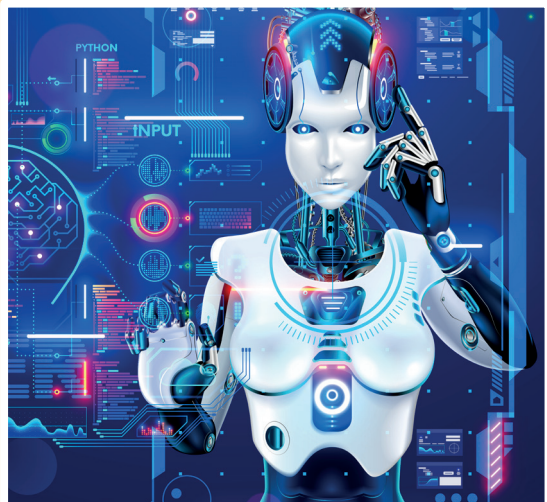


**Crashed**

# Reading Booklet

Key Stage 2 Practice Reading Booklet

<http://www.literacyshedplus.com>



**Cyborg**

## Cyborg

It had been a thousand years since the last hundred-percenter had disappeared from the face of the Earth. Since then, every human had been at least part machine, adapted from birth with new and exciting technology.

Graff had been fitted with a bionic eye and an ultra-hearing implant when he was only two days old. He'd never known any different until now. Suddenly, his tech had stopped working.

He lay in bed and stared at the ceiling of his sleeping pod. Around him, he could hear the usual morning noises of the ship waking up for another day toiling on the astro-farms. Only today, the noises seemed to be filtered through a ball of cloth: they were distant and muffled. He shook his head, but it didn't improve. He spoke quietly but loud enough to hear, but none of the sounds reached his ears.

Now, he realised that he couldn't see properly, either. His human eye seemed to be working correctly, but the bionic filter attached to his other was flickering in and out of focus. With a grunt and wincing with the pain, he pulled the attachment away from his skin. His eye, left intact but having grown lazy behind the bionic, blinked and strained in the unfamiliar light. After a few seconds, it grew accustomed to the new sensation, and Graff realised that he could see properly, even if he had lost the ability to switch to night-vision or to zoom in.

He stood up and crawled from his pod, stopping only to hastily throw on some clothes. He glanced out into the corridor and quickly fell back, his mouth agog and his breath quickening. He shook his head again, desperate not to believe what he'd seen. He peeked around the door frame again, but it was all true. There, in the corridor, were the crew of the ship, all staggering around in some degree of distress.

"It's the Waveforce," one elderly man cried, collapsing against the wall as his cybernetic legs failed. "It's the power that controls all of our upgrades, and it's failing!"

Could that be true? The Waveforce was the energy that powered the whole universe, not just the bionic upgrades that mankind had been fitting itself with for generations. If it was failing, then the whole universe was at risk.

Graff grabbed his satchel and fled towards the captain's deck. As a messenger, he had permission to enter, so he was hopeful that the captain would be able to give him more information. Every corridor was filled with people battling with unruly devices, whether they were bionic limbs or adapted senses like his own eye and ears. Up close, he could just about make out what people were saying, but the rest of the sounds arrived distorted and clouded in fog.

The door to the deck opened softly, sensing Graff's identity from his retinas as he approached. He stumbled to a halt as soon as he stepped into the polished white room. He'd forgotten that the captain had been fitted with an upgraded heart the year before. That had failed too. The ship was adrift in space.

1

What were humans called who didn't have any machine parts?

1 mark

2

Using information from the text, tick one box in each row to show whether each statement is **true** or **false**.

	True	False
Graff was born with his enhancements.		
The enhancements are powered by the Waveforce.		
His own eye was still working behind the bionic eye.		
Graff had an upgraded heart.		

2 marks

3

a) What "upgrades" did Graff have?

1 mark

b) When his upgrades failed, how did it affect him? Use evidence from the text to support your answer.

2 marks

4

Where do most people work on the ship?

1 mark

5

What was the first sign that things were going wrong with other people as well?

---

---

---

1 mark

6

Look at the paragraph beginning: ***He stood up and crawled from his pod...***

**Find** and **copy a phrase** that tells you Graff was shocked by what he saw.

---

1 mark

7

*Every corridor was filled with people battling with unruly devices...*

What does **unruly** mean in this sentence?

---

1 mark

# SATs Practice - Cyborg

1. Hundred-percenters
2. **Give 1 mark for two correct answers. Give 2 marks for three or more correct answers.**  
False  
True  
True  
False
3. **a)** Bionic eye and an ultra-hearing implant  
**b) Give 1 mark each (only 1 mark per “upgrade”), to a maximum of 2 marks, for:**  
*He couldn't hear properly*  
*Everything sounded like it was distant and muffled*  
*The bionic eye was flickering in and out of focus*
4. Astro-farms
5. The crew of the ship were all staggering around in distress
6. His mouth agog
7. Not doing what they were supposed to